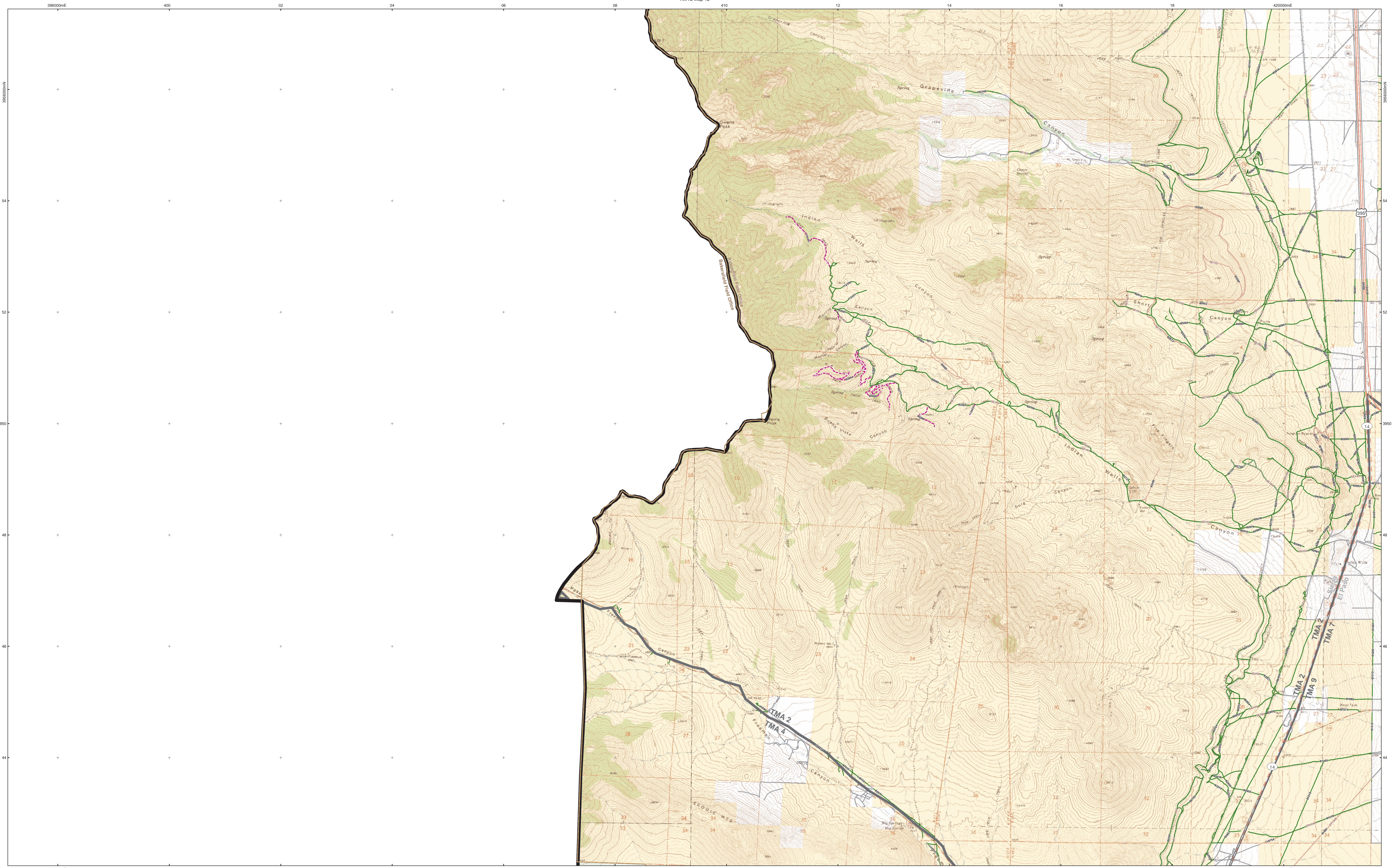


# Western Mojave Travel Management Plan Draft Environmental Impact Statement

## Travel Management Area 7 - Map 1 of 23

December 2014  
Walker Pass, Owens Peak 7.5 Minute Topographic Maps



Coordinate System: Universal Transverse Mercator (UTM) NAD83/WGS84

- Route Designation**
- Motorized
  - Non-motorized
  - Non-mechanized
  - Administrative/Authorized Use Only
  - Transportation Linear Disturbance
  - Non-BLM\*
  - Route with Subdesignation
  - WEMO Planning Area
  - WEMO Travel Management Area
  - WEMO Subregion
  - BLM Field Office Boundary

- Land Ownership**
- Bureau of Land Management
  - Forest Service
  - National Park Service
  - Department of Defense
  - Private

- Resource Data**
- Area within 1/4 mile of a sensitive receptor
  - Area within 1 mile of a sensitive receptor
  - Residential Area
  - Wilderness Area
  - Area of Critical Environmental Concern
  - Active Grazing Allotment

- Resource Data (Cont.)**
- Desert Linkage Network
  - Area Prone to Erosion Due to Slopes Greater than 10 Percent
- Air Quality Management Districts**
- Great Basin Unified
  - Kern
- California Air Basins**
- Mojave Desert

**Unusual Plant Assemblage**

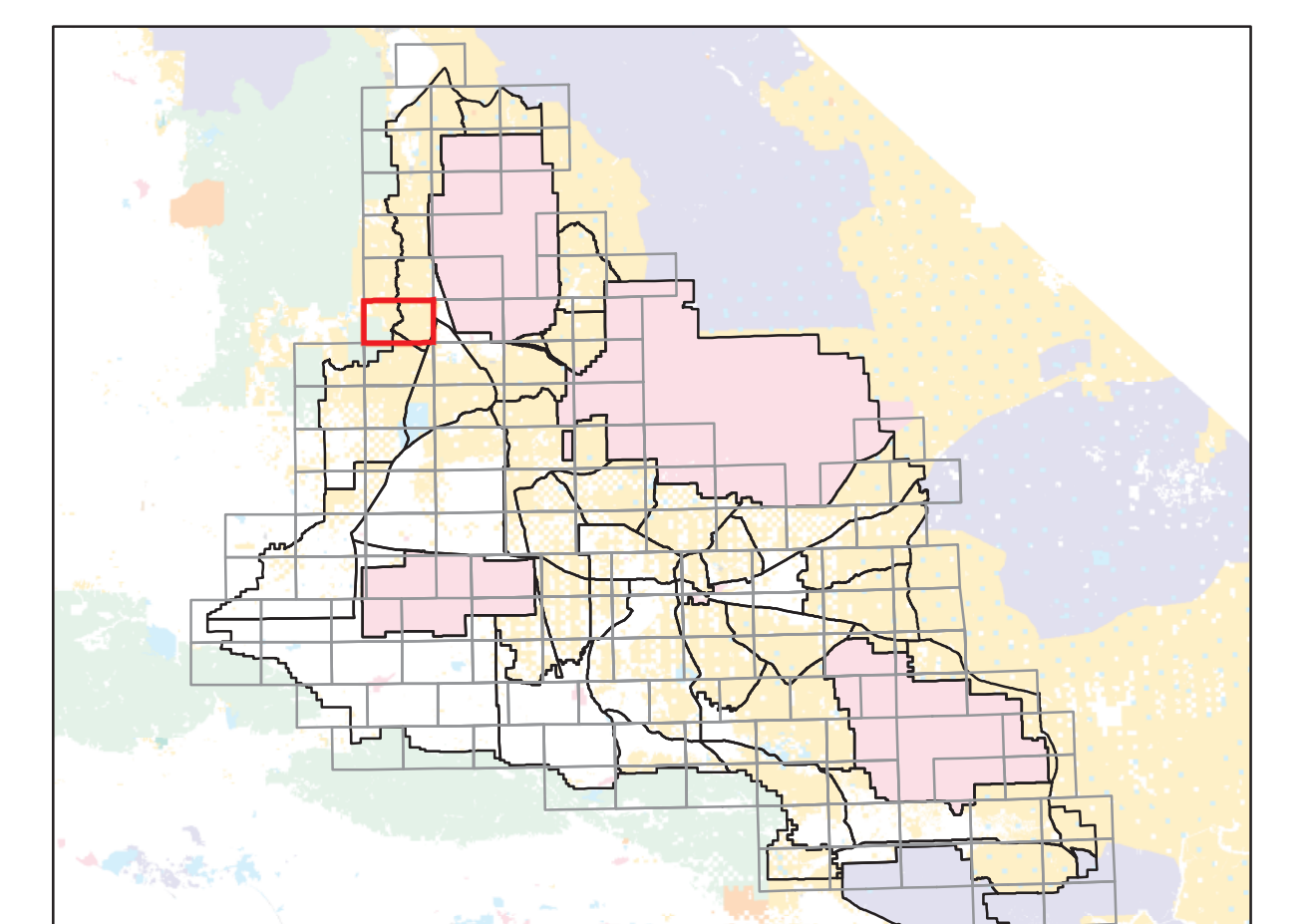


**US Department of the Interior  
Bureau of Land Management**

California Desert District, Barstow Field Office,  
Ridgecrest Field Office, Needles Field Office,  
Palm Springs Field Office  
cawemopa@blm.gov  
Developed October 2014 by PMLM/BR

The Bureau of Land Management makes no representations or warranties regarding the accuracy or completeness of this map. The Bureau of Land Management shall not be liable under any circumstances for any direct, indirect, special, incidental or consequential damages with respect to any claim by any user or any third party on account of, or arising from, the use of this map or the data from which it was derived.

When differences in accuracies between routes and roads shown on the USGS topographic base map occur, the base map should be considered less accurate.



\*Route Designations apply to those routes found on BLM administered Public Lands only. Routes shown on non-BLM administered lands are for reference purposes only.